

5 Foot Security Bike Chain & Lock BL 12



This 5-foot security chain will lock up both wheels and the frame of bicycles to stationary objects as large as 20" in diameter (posts, trees, railings etc.). A special extender ring makes it possible to loop objects this large with one end while the rest of the chain secures the entire bicycle. This gives you the equivalent of a 7-foot chain without the additional bulk and weight. Urethane coating on the links and ring protects the bicycle's finish, eliminates the need for bulky vinyl sleeves and provides for compact storage around the seat post or in bike packs. The chain has especially tight linkage which resists even professional bolt-cutting tools and is constructed of 7/32" diameter, case-hardened steel with a tensile strength of 300,000 PSI.

The heavy-duty combination lock operates on a system of stops you feel rather than see, so that it can be easily opened at night or when the face of the lock is turned away from you. Its pressure cast body is resistant to hammer blows and vises. The case-hardened shackle resists cutting shears and has a malleable center to prevent shattering, even when chilled with Liquid Freon.

Retail Price: \$11.50
BL 13 (chain only): \$9.00

Delays

As many of you now know, there have been delays in the shipping of our products due to the materials shortages. Please bear with us. We are doing the best we can and are finally gaining on our backlog. Thanks.

The Hideaway Two-Man 7lb. 8oz. Backpacking & Bicycle Touring Tent T 91

It has been our aim to advance the fields of backpacking and bicycling through innovative design and quality craftsmanship. We looked at contemporary tent design with this philosophy in mind and concluded that we could make a significant contribution to the state of the art.

Since the primary objective of a tent is to provide a comfortable shelter in a hostile or potentially hostile environment, we concentrated our efforts on the following facets of tent design and construction:

1. Fast-setting
2. A working vestibule completely protected from the elements
3. A warmer, dryer sleeping pod
4. Better ventilation
5. Improved stitching
6. Reduced fire hazard

Fast Setting

The primal need for a tent is to get yourself out of the weather and away from insects. A practical tent should therefore go up fast. Setting its tail directly into the wind, the T-91 goes up in 10 minutes (5 to 7 minutes with a little practice) with only two sets of poles and two stakes. In winds over 35 m.p.h., four additional stakes are provided for the tie-down tabs at the corners. (*See "Setting Instructions" for details).

Working Vestibule

The Hideaway's large front vestibule is a transitional shelter where you can get in out of the weather and out of wet gear without taking the weather in where you sleep. Protected down to the ground on all sides, the vestibule is fitted with two 5' zippered flaps that always provide a lee entry. This area also serves as a "mud room"

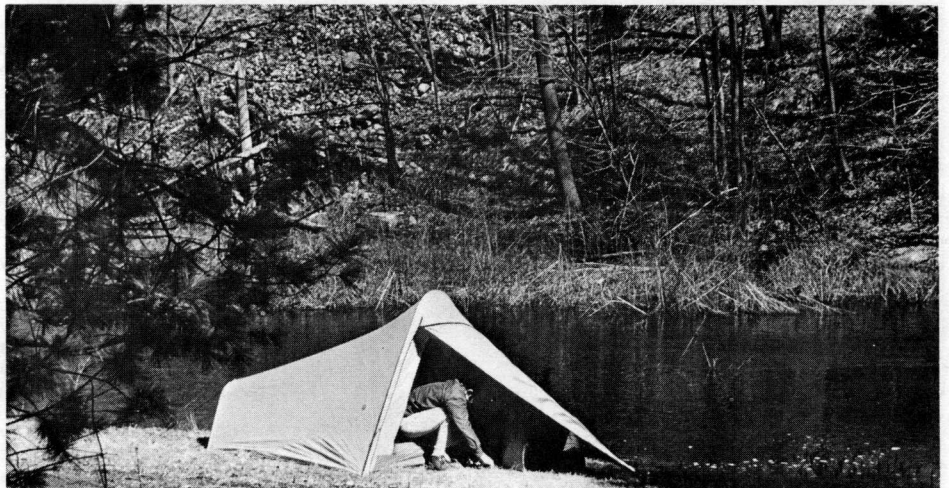
for storing foul-weather gear, wet packs, muddy boots and anything too large or grubby to keep in the sleeping pod, but which you want kept dry and within easy reach.

The Hideaway T-91 has the largest, most practical and best-protected vestibule of any lightweight tent we have seen. For comfort in the wilderness, it is essential.

Warmer, Dryer Pod

Conventional tent design relies on the principles of evaporation and convection to control condensation by allowing an outside air flow between a waterproof fly and a breathable tent roof. The combination is more or less effective depending on design, construction and climatic conditions. Of course, the inherent assumption in this concept is that a cold, dry tent is preferable to a warm wet one.

The new system we've developed in the Hideaway T-91 insulates the sleeping pod from the outside air with a band of dead air space encapsulated between two layers of microporous rip-stop nylon which together will keep out the wind and rain but still breathe. As a result, there is no meaningful air flow in the tent (unless mechanically induced by opening the screened flaps at either end -- *see "Ventilation" section below) or in the air space above it. Therefore, most of the warmth liberated by the sleeping occupants (approximately 250 to 350 BTUs per adult per hour) is retained in the tent. As some of this warmth gradually bleeds thru into the dead air space above, a warm buffer zone (relative to the ambient air temperature) is developed which insulates the sleeping pod from the cooler outside air, greatly reducing the probability of condensation. This is true because warm



THE HIDEAWAY TWO-MAN BACKPACKING TENT T-91. Joe Montgomery works in the Hideaway's 55 cubic foot vestibule

New Catalog: One Per Product

Enclosed with this issue of the News is a copy of our Spring/Summer 1974 Guide to Backpacking & Bicycling Equipment. You'll also find the current price list, plus a list of new prices which become effective June 1.

The Spring/Summer guide includes assembly and fitting instructions for many of the products, and a reference section that will be of value to the serious cyclist and back-packer. The book's light weight and compact size allow it to be easily stowed as a ready source of information.

For this reason, we are packing at least one catalog with every product shipped to you as of May 1. Please make sure that you give one to each customer. Call Bill Tanner or one of the sales girls (see picture on back page) if you need extra copies.

Congratulations

We're happy to announce the birth of a 7lb., 3oz. girl, Shawna Nicole, to Bill and Suzanne Tanner. Bill is our Nat'l Sales Manager. Shawna was born April 18 in Ridgewood (N.J.) Hospital. The Tanners have another daughter, Delisa Renee, 4.



V. GEORGE McLAUGHLIN, the editor's grandfather, at the age of twelve with a "new" two-wheeler. The year was 1896; the place -- Jermyn, Pa.

CANNONDALE NEWS

FOUNDED 1973

PUBLISHED AUG., OCT., JAN., APRIL
TOM CONNOR, EDITOR

© 1973 Cannondale Corporation

The Hideaway T91: A Tent For All Seasons

Continued from page 1

air will condensate on a cold surface. The warmer that surface is, the less the probability of condensation. And the buffer zone in the T-91 keeps the inner surface warmer than the inner surfaces of conventionally designed tents.

Furthermore, should the temperature of the inside layer of nylon drop below the dew point (the temperature at which moisture in the air will condense), there will be considerably less condensation than would occur in tents of conventional design under the same climatic conditions. Again, this is true because the T-91's dead air buffer zone keeps the inner layer warmer than do conventional tents, and once the dew point is passed condensation occurs in proportion to the coldness of this layer.

The net result is a warmer, dryer place to sleep: one that does not require a heavy expensive sleeping bag as long as the temperature is above 0° F and the occupants use a good foam ground-pad -- for insulation as well as comfort.

Better Ventilation

As mentioned in the section on "Fast-Setting", above, the Hideaway T-91 should be set with its tail in to the wind (*also see the "Setting Instructions", below) for the best ventilation. In this position, the aerodynamic shape of the T-91 induces flow-thru ventilation, even on calm days. You can regulate the flow of air by means of the screen vents at the front and rear of the sleeping pod in conjunction with the zippered vestibule flaps.

Improved Stitching

We evaluated two methods of stitching in regard to the various types of construction used in the T-91, and we concluded that a double needled chain stitch was superior for the high-stress, straight-away seams while a double-needled lock stitch was best for the detail work (zippers, reinforcements etc.) We've outlined the basis for our conclusions below.

1. A chain stitch is stronger than a lock stitch for two reasons: (a) There is approximately 40% more thread in a chain stitch and thus there is less strain on any given length of thread. (b) Because there is more thread there is more elasticity (1.4 units of thread will stretch further than 1.0 units) and more elasticity means more give under the stress of wind, snow etc. Thus, a chain stitch is less likely to "pop" than a lock stitch.

2. A broken chain stitch will not allow a seam to split as readily nor as far under continued stress as a lock stitch, because it tends to "jam" on itself rather than open up.

3. A chain stitch is considerably dryer than a lock stitch because it stretches, while a lock stitch pulls and elongates the needle holes, al-

lowing more water to seep in.

4. A tent with chain-stitched seams will retain its original shape better and longer than a tent with lock-stitched seams. Again, due to the elasticity of a chain stitch, the seam tends to return to its original length to a greater degree than a lock-stitched seam.

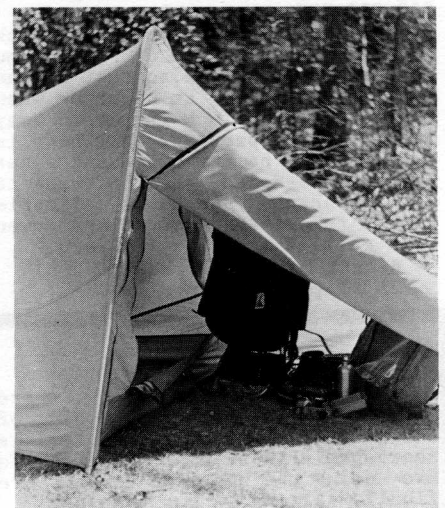
In summary, we believe that the double-needled chain stitch is superior for long straight seam construction, especially where elasticity is essential to proper design function. Conversely, the lock stitch is more suitable to intricate and detailed sewing because a high standard of quality control is difficult to maintain with a chain stitch.

Reduced Fire Hazard

We have gone to considerable time and expense to make the Hideaway T-91 flame retardant. The chemical process used to treat the rip-stop nylon is sensitive and complicated. If the fire retardancy level is to be maintained, the information on the safety label, reproduced below, must be closely followed. One is sewn into the vestibule seam of every tent. Please read it carefully.

Cannondale Hideaway Tent T-91.	
Serial No.	Manufacturing Date
THIS IS A FLAME RETARDANT TENT	
<p>The coated and uncoated rip-stop nylon used in the manufacture of this tent exceed the Federal Flammable Materials Act and are certified to meet or exceed the flame resistance requirements of CPAI-84. Dust, pollen and other airborne matter which may accumulate on surfaces increase the flammability of treated materials. Hose the tent down occasionally or cold rinse in a top-loading washing machine. Very hot water, strong detergents or alkalies used in the laundering of this tent may reduce its flame resistance characteristics. Use only mild detergents sparingly and warm water with gentle agitation. Double rinse, preferably in cold water, to remove all residual cleansing agents.</p>	
CAUTION	
<p>Keep away from open flame and high heat sources. Flame resistant coatings greatly reduce the flammability of lightweight materials but do not render the materials fireproof or heat resistant.</p>	

*See the new catalog for specifications. See enclosed price list for cost and packaging.



The Tent Fire Issue

The most important of the T-91's many unique features, we believe, is its specially treated rip-stop nylon, which is certified "Flame Retardant". To our knowledge, only one other tent on the market qualifies for this certification. The feature is of great importance not only to our dealers and consumers, but to the industry at large, because during the past two years some 20 lawsuits involving fire accidents in canvas tents were filed nationwide and the question of fire safety in all tents is currently a critical issue at state and federal levels.

For a briefing on the issue, we quote from an article by Robert J. Kolcz -- "Your Tent Is Probably Extremely Flammable" -- which appeared in the April BETTER CAMPING and HIKING:

"Lately, the lawsuits brought against camping tent manufacturers by victims of tent fires have been increasing. In most of these cases, the courts have ruled that the manufacturer has a responsibility to assure a safe product for the camper...

Most tents available to campers are not flame-retardant -- so unless it's plainly marked as such, don't assume you're buying a treated tent. And although several states have passed legislation concerning the use of flame-retardant fabrics in camping tentage, the tent industry appears to be waiting to see what develops at the federal level...

Though many equipment manufacturers may question the necessity of a flame-retardant standard for lightweight tents, and even though we've heard no reports of severe injury caused by a nylon-tent fire, the potential is there...

Despite the controversy, it now appears that state or federal laws will eventually force all but flame retardant tents off the market."

Following Orders

Cannondale processes thousands of orders each week. The envelopes they come in are usually discarded upon opening. As a means of assuring prompt and efficient handling of your order, we ask that your return address be inscribed on every order form and all correspondence.

Call Us Collect

As a service to our dealers, we have always maintained a policy of accepting collect calls from any where in the continental United States.

It is IMPERATIVE, however, that you call Bill Tanner or one of the sales girls person-to-person collect. In this way, if he or she is out of the plant or on another line, as is often the case, our operator can take your message and number, and have the sales person return your call as soon as possible.

Featured Dealer: Gizmo's of Van Nuys, California Where Talking Is Second Best To Walking

"Years ago people used to go on hikes. They threw a few cans of beans and a pound of bacon in their Army surplus knapsacks and went stomping blindly through the woods. It wasn't a sport, it was just sort of an aimless walk to nowhere. Now hiking is a sophisticated, highly-skilled game called backpacking. Everything is so scientific that it is doubtful if a tenderfoot scout could handle it anymore. Possibly the finest practitioner of this new art form is a warm and curious character named Gizmo Getzlaff, who sensed a sweaty trend and moved up until he was its chief guru. Gizmo has done it all -- slogged his way through the Black Forest, climbed over several Swiss mountains, and trod nearly every famous tundra, ridge line or desert you can name."

-- Wells Twombly, writing in the San Francisco Examiner

With the gift of gab and a dedication to communicating his love of the outdoors, Richard "Gizmo" Getzlaff is himself the best advertisement his small hiking and camping store could have.

The shop -- simply "Gizmo's" -- is modest and unpretentious. There are no gimmicks. Its success, in fact its very existence, is a direct result of the good vibrations Getzlaff seems to elicit from just about everybody he comes in contact with.

"I turned to the outdoors because I was unhappy with working inside," he recalls. "I was an artist at the old Los Angeles Herald-Express from 1948 to 1954 and later a political cartoonist for the Las Vegas Review-Journal. I closed the door on my art career and turned to guiding hikers and to scouting. There was little security but at least I got away from the usual 'take-home-job worries!'"

Gizmo was so well-thought of as a scout master in Van Nuys that in 1967, the fathers of seven of his

scouts raised \$7,500 to help him start his store.

"Although the interest in backpacking was just starting then, these seven men had enough faith in me that they didn't ask for collateral and assured me that I was bound to be a success."

To this day, the basic requirement for working at "Gizmo's" is that one be an Eagle Scout.

When he's not on the trail or in the shop, Getzlaff spends his time touring Southern California, lecturing and spreading the good word of the good life outdoors. He has, over the years, become somewhat of a philosopher on the subject.

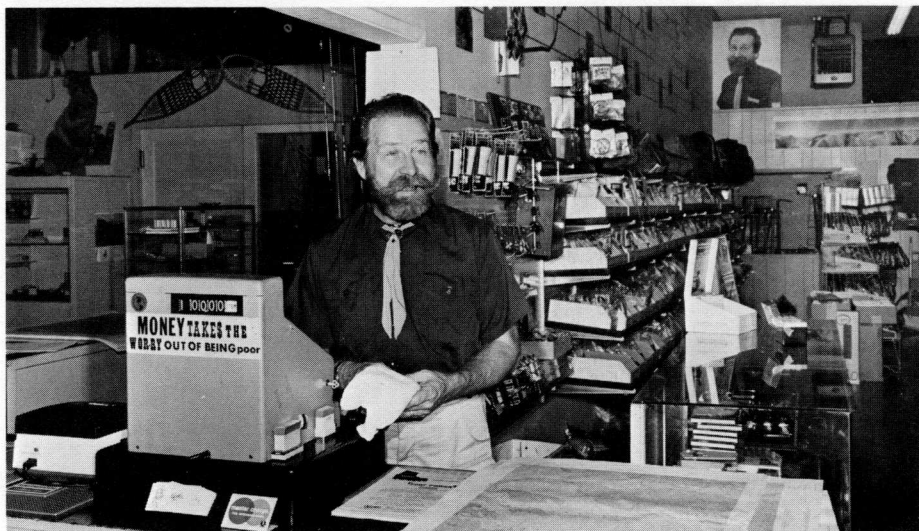
"Modern technology has made backpacking a prime participant sport," he says. "And a plastic society has driven people into the wilderness to recapture what they feel they've lost."

"One look at Disneyland ought to tell people why this sport is so special. Why gawk at artificial mountains when real ones are there? Why have plastic fun on a make-believe island in the middle of a make-believe Mississippi. Look at those cement animals! Why not go look at a live one?"

The beautiful part of hiking is that there is no rush, no competition. In hiking, you first have to learn how to saunter and then negotiate the terrain. In this activity you pace yourself. You stop to rest and meditate, to watch and survey when you want to.

"As a character, Gizmo Getzlaff is something of a fraud. He wears his backpacking clothes everywhere. He has this magnificent red beard and handlebar mustache. He talks of high adventure. He is a dedicated square, a former scoutmaster and a husband who lives to share backpacking experiences with -- of all people for a southern Californian to be associated with -- his wife!"

(Wells Twombly)





ALONG FOR THE RIDE. Mrs. Sharon Aument of Lancaster, Pennsylvania with her sons Andy, left, and Stacy. The photograph appeared in the March 15 edition of The Lancaster New Era. (Photo by O. Henry Hertzler).

CANNONDALE CORPORATION
35 PULASKI STREET
STAMFORD, CONNECTICUT 06902